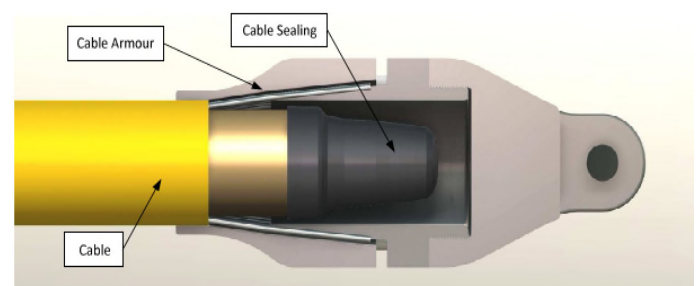
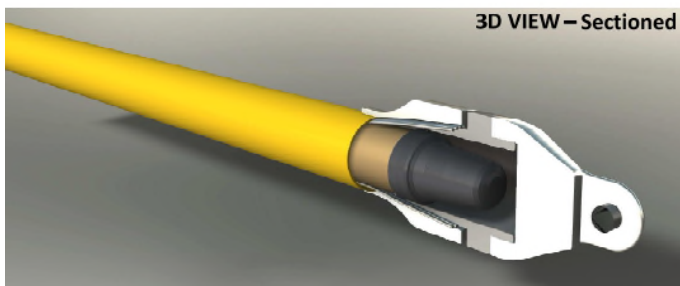
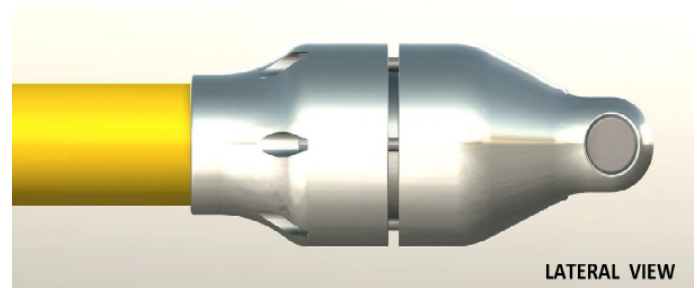
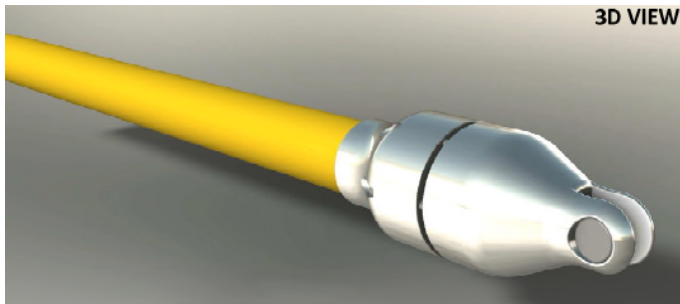


# PULLING HEAD



## DESCRIPTION:

Pulling head manufactured by PCS Italiana provides a strong and reliable solution for cable sealing and pulling during the delicate phases of submarine cable deployment and pulling on platform and also allows also cable deployment and abandon on the seabed for a later completion of the activities.

The design considers the complete cores tightening to prevent water ingress also for long periods.

Mechanical performance of the pulling is granted by a specific inner hang-off that delivers strong mechanical performances without affecting the power cores and optical fibre elements that may be inserted in the event of a composite cable. The pulling head is also provided with a built-in anti-torsion swivel.

Design is compatible for power cables, optical fibre cables and composite solutions.

Dimensioning takes into consideration: type of cable, pulling requirements, j-tube dimensions.

## MATERIAL:

- Pulling head body : SS316L
- Sealing elements : Sealant Resin, sealant mastic and heatshrink caps
- Bolts & Nuts : AISI 316 A4

## ENTRY DATA FOR DIMENSIONING:

- Cable details and j-tube details